



BACK TO SCHOOL

2020-2021

**Re-Opening School Policies and Procedures
for Parents and Students of St. Dominic School.**



the school day

AT-A-GLANCE

We are excited to be back in-person this fall! Protocols will look different than normal to accommodate safety for all. We will have staggered drop-off and pick-up times for all families.



HOW WE WILL COMMUNICATE WITH YOU

We will continue our weekly school newsletter and will utilize email for updated information between newsletters. All families should check email regularly for school messages.



PARENT SUPPORT FROM HOME

At school we are implementing new safety and hygiene protocols to help mitigate the spread of germs. We are asking our families to also follow these protocols at home to help ensure that as few "outside" germs as possible come into school each day.



9.8.20

first day of school



7:40-8 AM

arrival time



1:50-2 PM

dismissal time



introduction

WELCOME BACK!

Our school and planning team have spent the past month preparing for the safe return of students and staff to in-person learning. While we know that school will look different, the health and safety measures we have put in place are there to ensure the safest return to school. It is extremely important that all families read, discuss and follow the safety protocols set forth in this plan. Should you have any questions, please do not hesitate to reach out to me through email or by calling the school office. We cannot wait to see our students' smiling faces this fall!

Mrs. Dawn Biren
Principal

A PHASED APPROACH TO RE-OPENING

1

DISTANCE LEARNING

This is where we were at in Spring 2020 with everyone working from home. We may need to move back here due to evidence of community spread.

2

IN-PERSON AND ONLINE HYBRID

There may be a surge of COVID-19 positive tests, but not all students and staff need to work in a distance model. This may necessitate more restrictions but not force the entire closure of the school.

3

IN-PERSON WITH ONLINE LEARNING AS NEEDED

This is where we will begin this fall. Some students may choose to distance learn due to health reasons. We will have some restrictions in place to mitigate the spread of germs.

4

IN-PERSON WITH SOME RESTRICTIONS

There is a significant, consistent decline in COVID-19 cases in our community which allows for the loosening of some restrictions. Some students may still be in a distance learning model due to individual concerns.

5

IN-PERSON WITH NO RESTRICTIONS (BACK TO "NORMAL")

The health risk for COVID-19 has ended due to the discovery and distribution of a vaccine. We move back to our "traditional" education model at St. Dominic School.



PREPARING FOR FLEXIBILITY

As we know, information on COVID-19 and ways to mitigate the spread of the virus change on a daily basis. We will continue to update our school's plan as new information becomes available. When it is needed to move between phases listed above, you will be notified via email, the school newsletter and information will be posted to the school website.

our shared commitment

HEALTH AND SAFETY

The health and safety of our students, staff and families guide our decisions. Our decisions will always be grounded in scientific information. At this moment, we feel the following health processes/procedures will help to mitigate the spread of COVID-19 in our school. As scientific research changes, so may our processes and procedures.

OUR COMMITMENT:



TEMPERATURE SCREENINGS

All students will be temperature checked prior to exiting their vehicle each morning in the school parking lot.



HAND WASHING

Students will be taught proper hand washing routines and will be required to wash hands frequently during the day.



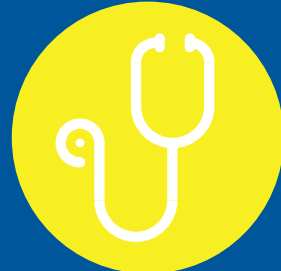
RESPIRATORY ETIQUETTE

See [page 6](#) for exact details based on each age level.



FREQUENT SANITATION

Hand sanitizer dispensers have been installed throughout the school for ease of frequent use.



NURSING STAFF

We will continue to receive nursing support from Northfield District.

YOUR COMMITMENT:



FOLLOW HEALTH + SAFETY PLAN

All students, families and staff **MUST** follow health and safety protocols.



STUDENTS WITH SYMPTOMS

Students with a fever, persistent cough or shortness of breath should not come to school.



PRAYER

The power of prayer is undeniable. Please continue to share this gift from God with your children.



RESPECT AND CHARITY

Following these protocols will help to ensure a safer learning environment for all.

putting policies into practice

A DAY IN THE LIFE AT ST. DOMINIC SCHOOL

Even though this year will look different, we know that the following changes to our day will help to mitigate the risk of exposure for our students, staff and families.



Per CDC guidelines, all student desks will be distanced 6' and extra furniture removed from the classrooms.



Movement in common areas will be limited this year. Stairs and hallways will be marked as one-way.



All students and staff will use face coverings. See [page 6](#) for details by age level.



We will have staggered drop-off & pick-up times. Parents will sign-up for their desired time.
7:40am or 8am
1:50pm or 2pm



Sanitizer dispensers have been installed throughout the building for ease of frequent use. All will be instructed on proper use.



We will offer a lunch program. Lunch will be delivered to and eaten in the classrooms.



K-2: Live Stream mass for at least September
Gr. 3-8: In-person mass with hygiene guidelines, more details to come.



All students will enjoy recess outside when possible. Two classes will be outside at one time. Students will wear face shields only for recess.



At this moment we are unsure about extracurricular activities.



We will offer Saint Watch before and after school
7-7:45am
and
2-5:30pm



We will not use District transportation this year. All students will be driven to and from school, based on their chosen drop-off and pick-up times.



Only essential visitors, parents, and vendors will be allowed in school. They will need to follow strict hygiene guidelines.

planning for the year

KEY AREAS OF PREPAREDNESS



The following are new protocols for our school to ensure the health and safety of all.

1

FACE COVERINGS

Preschool-2nd Grade: Students will wear a face shield attached to a ball cap. This will be worn at all times during the school day, including recess. Students must wear a face mask during arrival and dismissal at school. One face shield and two masks will be provided for each student. Students may also provide their own face mask.

Grades 3-8: Students will wear a face shield attached to a ball cap. This will be worn at all times during the school day, including recess. When moving around the school (restroom, drinking fountain), students will also wear a face mask. Students must wear a face mask during arrival and dismissal at school. One face shield and two masks will be provided for each student. Students may also provide their own face mask.

2

ARRIVAL/DISMISSAL

All parents will sign up for either a **"Blue Group" 7:40am and 1:50pm** arrival/dismissal time, or a **"Yellow Group" 8am and 2pm** arrival/dismissal time. A link will be sent out to a sign up survey the week of August 3.

All students will be given a temperature check and health screening before exiting the car in the school parking lot. Any student with a temperature over 100.0 will be sent home with their parents.

Upon entering the school, all students will sanitize their hands and proceed directly to their classroom.

We will not to use District bussing this year. By not using bussing we are able to: limit the exposure of our students and staff to additional germs, adjust our ending time to accommodate for increased daily disinfecting in the classrooms and cluster our school breaks for more limited exposure to germs. These adjustments will help to mitigate the spread of germs in our school building. For questions, please contact the school office.

3

CLEANING / DISINFECTING FROM HOME

Each day students must bring their face mask and water bottle home for disinfecting and cleaning. Face shields and caps will be left at school and disinfecting will be done by the classroom teacher.

planning for the year

OUR SCHOOL DAY & CALENDAR



Part of our plan to help mitigate the spread of germs in our building surrounds our start/end time each day and our school calendar. In addition, due to the increased exposure outside of our building over Thanksgiving and Christmas breaks, we will move to Distance Learning for all students for the three weeks in December and one week in January. All of this is subject to change.

1

DAILY SCHEDULE

Since parents will be transporting their children to and from school, we will utilize two different drop-off and pick-up times to help stagger the number of cars in our parking lot. Exact details on this process will be sent home to parents the week of August 3.

- Blue Group- 7:40am drop-off and 1:50pm pick-up
- Yellow Group- 8:00am drop-off and 2:00pm pick-up

This change in our ending time will allow our teachers and staff to adequately disinfect every surface in our building on a daily basis.

2

SCHOOL CALENDAR

One strategy that schools are using to mitigate external exposure to germs is through clustering breaks from school. Right now, we are planning on the following clustered breaks for the first semester.

- No MEA Break on Oct. 15 & 16; days off moved to Nov. 23 & 24
- Nov. 6 & 9 will be in-school days; days off moved to Dec. 21 & 22
- Jan. 18 & 29 will be in-school days; no days off

An [updated school calendar](#) is posted to the school website. We will make a decision on 2nd semester breaks this fall based on the most current scientific data.

3

DISTANCE LEARNING

We know that there are times when students will need to learn from home due to health issues. There may also be a time when the entire school may need to move to Distance Learning depending upon community spread in the Northfield area. Along with clustering breaks, St. Dominic School will have scheduled Distance Learning for all during the following time period to help mitigate the spread of new germs:

- Nov. 30-Dec. 18 all students will Distance Learn from home
- Jan. 4-8 all students will Distance Learn from home
- Jan. 11 all students and staff will return to our building in-person

final notes

FAITH + FAMILIES TOGETHER

For the Lord sets a father in honor over his children and confirms a mother's authority over her sons. Sirach 3:2

Dear parents,

Peace of Christ to you!

Thank you for allowing St. Dominic School the opportunity to partner with you in teaching your children all about God and the beauty of God's creation. As the verse from Sirach teaches, the Lord has blessed you as parents with a position of honor and authority over your children. And so, we are honored that you have chosen to entrust them to our care during these critical developmental years.

And Jesus advanced in wisdom and age and favor before God and man. Luke 2:52A

Catholic Schools have a unique ability to serve as an extension of the family. Although I just began as pastor of St. Dominic Parish and School June 1, 2020, I have already heard stories and witnessed examples of the strong familial culture which exists here, and am excited to be part of it and contribute to it. I have seen this in action as our school team, led by our principal Dawn Biren, has been working diligently using science and medicine backed resources in creating a safe return to school plan. Together with your family our St. Dominic School family will invest in your children to assist them in "advancing in wisdom and age and favor before God and others." I look forward to meeting you.....from a six foot distance!

Fr. Gregory



OUR RE-OPENING LEADERS:

Dawn Biren	Andrea Peterson
Fr. Gregory Abbott	Bridget Ostendorf
Kati Reak Sletten	Rebecca
Kayla Paro	Schoephoester
Jennifer Fischer, MD	Stacey Zell, LRT



GET THE LATEST INFORMATION

Please make sure to check your email regularly for updates from the school and your classroom teachers. We will also post updates on the school website.

ST. DOMINIC SCHOOL



EST. 1926



216 N. Spring St.
Northfield, MN. 55057

schoolofstdominic.org | 507-645-8136

OUR MISSION STATEMENT

*St. Dominic School inspires children to excel as confident leaders, critical thinkers,
and responsible citizens in a Catholic, values-based community.*